

# Trust in Government



October 19<sup>th</sup>, 2011

## Trust in Fed generally low across Canada

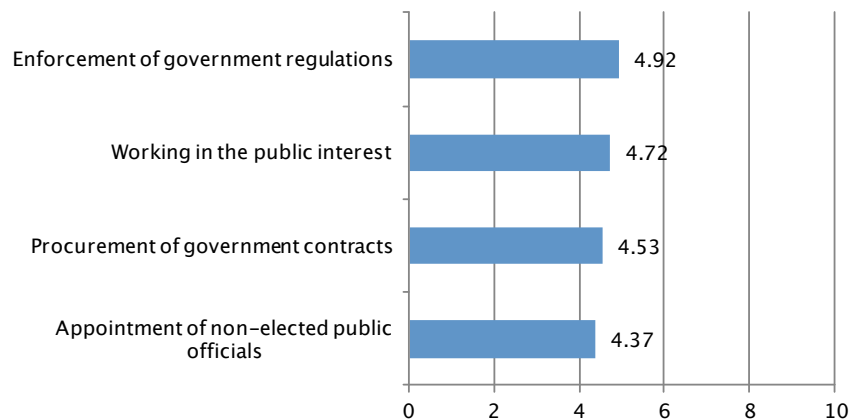
### METHODOLOGY

To follow is a review of the latest Nanos national random telephone survey of 1,209 Canadians 18 years of age and older. It was completed between September 25 and October 2, 2011. The statistics of a random sample of 1,209 respondents are accurate to within 2.8 percentage points, plus or minus, 19 times out of 20. Readers should note that the data was weighted for gender and age to match the Canadian census results. Results should be considered representative of the Canadian population. Results may not add up to 100% due to rounding.

Readers should note that trust data is based on mean scores from each region.

Any use of this research data should identify it as a "Nanos Poll".

QUESTION: On a scale of 1 to 10, where 1 is no trust at all and 10 is complete trust, please rate your level of trust in the federal government on the following: [ROTATE] Procurement of government contracts, enforcement of government regulation, working in the public interest, and appointment of non-elected public officials.



### FEDERAL TRUST - TEN POINT SCALE (1 NO TRUST AT ALL, 10 COMPLETE TRUST)

Responses	Procurement of government contracts	Enforcement of government regulations	Working in the public interest	Appointment of non-elected public officials	Trust Barometer**
Canada (n=1,209)	4.53	4.92	4.72	4.37	4.64
Quebec (n=301)	4.38	4.94	4.76	4.42	4.63
Ontario (n=364)	4.58	4.89	4.69	4.33	4.62
Atlantic* (n=121)	4.71	5.12	4.81	4.35	4.75
Prairies (n=242)	4.65	4.98	4.92	4.59	4.79
British Columbia (n=181)	4.39	4.72	4.39	4.05	4.39

\*Note: Small sample size  
\*\* Mean score average

Media inquiries should be directed to: Nik Nanos at [nnanos@nanosresearch.com](mailto:nnanos@nanosresearch.com) or (613) 234-4666 x237. Visit the Nanos website to sign up for instant email updates at [www.nanosresearch.com](http://www.nanosresearch.com).

# Trust in Government



October 19<sup>th</sup>, 2011

## Trust in provincial government particularly low in Quebec

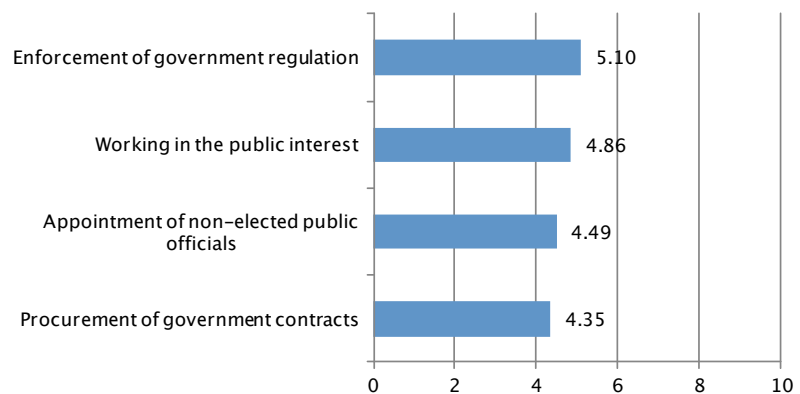
### METHODOLOGY

To follow is a review of the latest Nanos national random telephone survey of 1,209 Canadians 18 years of age and older. It was completed between September 25 and October 2, 2011. The statistics of a random sample of 1,209 respondents are accurate to within 2.8 percentage points, plus or minus, 19 times out of 20. Readers should note that the data was weighted for gender and age to match the Canadian census results. Results should be considered representative of the Canadian population. Results may not add up to 100% due to rounding.

Readers should note that trust data is based on mean scores from each region.

Any use of this research data should identify it as a "Nanos Poll".

QUESTION: On a scale of 1 to 10, where 1 is no trust at all and 10 is complete trust, please rate your level of trust in the provincial government on the following: [ROTATE] Procurement of government contracts, enforcement of government regulation, working in the public interest, and appointment of non-elected public officials.



### PROVINCIAL TRUST -TEN POINT SCALE (1 NO TRUST AT ALL, 10 COMPLETE TRUST)

Responses	Procurement of government contracts	Enforcement of government regulations	Working in the public interest	Appointment of non-elected public officials	Trust Barometer**
Canada (n=1,209)	4.35	5.10	4.86	4.49	4.70
Quebec (n=301)	3.51	4.76	4.48	4.32	4.27
Ontario (n=364)	4.45	5.13	4.87	4.35	4.70
Atlantic* (n=121)	5.04	5.77	5.40	4.80	5.25
Prairies (n=242)	4.86	5.22	5.22	4.81	5.03
British Columbia (n=181)	4.42	4.94	4.64	4.42	4.61

\*Note: Small sample size

\*\* Mean score average

Media inquiries should be directed to: Nik Nanos at [nnanos@nanosresearch.com](mailto:nnanos@nanosresearch.com) or (613) 234-4666 x237. Visit the Nanos website to sign up for instant email updates at [www.nanosresearch.com](http://www.nanosresearch.com).



NANOS OMNIBUS TRUST QUESTIONS – STAT SHEET

On a scale of 1 to 10, where 1 is no trust at all and 10 is complete trust, please rate your level of trust in the provincial government on the following: [ROTATE]

		Procurement of government contracts												
		Total	No trust at all	2	3	4	5	6	7	8	9	Completely trust	Unsure	
		Responses	Mean	Percentage	Percentage	Percentage	Percentage	Percentage	Percentage	Percentage	Percentage	Percentage	Percentage	
Region	Canada 2011-09	1209	4.35	15.4	8.4	8.6	8.7	23.0	11.7	9.2	5.0	1.2	.6	8.2
	Atlantic	121	5.04	6.8	7.5	9.2	4.3	21.6	16.8	14.8	7.9	.6	.6	9.9
	Quebec	301	3.51	23.8	9.7	14.0	12.2	17.6	8.8	3.0	2.1	.5	.8	7.6
	Ontario	364	4.45	16.5	7.5	6.2	7.1	22.5	11.2	13.6	5.0	.8	.4	9.3
	Prairies	242	4.86	11.9	6.3	3.8	8.1	30.1	10.2	9.9	8.4	2.7	.7	7.9
	British Columbia	181	4.42	9.3	11.7	10.3	10.0	24.8	16.1	5.7	3.7	1.2	.9	6.3
Gender	Male	602	4.36	16.4	8.5	7.8	9.6	20.2	12.7	10.1	6.1	.9	.4	7.3
	Female	606	4.34	14.4	8.3	9.3	7.9	25.9	10.7	8.2	4.0	1.4	.9	9.0
Age	18 to 29	249	4.91	7.2	7.1	8.0	10.9	27.5	7.8	16.0	8.4	.9	.0	6.2
	30 to 39	205	4.59	10.6	9.4	7.2	7.0	26.5	15.9	7.2	5.5	1.9	.0	8.9
	40 to 49	251	4.06	17.9	8.0	10.9	8.9	20.7	13.0	10.7	.8	.8	.0	8.1
	50 to 59	215	4.19	16.9	11.8	8.0	7.7	19.3	14.4	6.0	4.8	1.4	1.2	8.6
	60 plus	289	4.07	22.3	6.8	8.4	8.7	21.5	8.9	5.6	5.7	1.0	1.8	9.2
Vote Profile	Liberal	237	4.87	10.7	6.3	5.1	9.0	27.6	13.7	12.8	7.6	1.3	.3	5.5
	Conservative	377	4.48	12.6	9.9	9.9	8.3	22.6	11.3	9.7	6.2	1.7	.8	7.0
	NDP	280	4.05	18.0	10.5	10.6	9.9	21.9	9.2	8.3	4.0	.8	.9	6.0
	Bloc	34	3.08	36.2	14.5	4.3	6.8	15.7	9.2	2.9	3.4	.0	.0	7.1
	Green	28	5.24	10.6	.0	4.2	9.3	20.0	10.4	36.0	.0	.0	.0	9.5
	Other	11	2.61	37.5	25.0	10.0	.0	21.1	6.4	.0	.0	.0	.0	.0
	Undecided	241	4.13	17.8	5.0	8.4	8.5	22.1	13.9	3.9	3.0	.9	.7	15.6

Random telephone survey of 1,209 Canadians 18 years of age or older between September 25<sup>th</sup> and October 2<sup>nd</sup>, 2011. The margin of error for a survey of 1,209 respondents is ± 2.8 percentage points, 19 times out of 20.



NANOS OMNIBUS TRUST QUESTIONS – STAT SHEET

On a scale of 1 to 10, where 1 is no trust at all and 10 is complete trust, please rate your level of trust in the provincial government on the following: [ROTATE]

		Enforcement of government regulation												
		Total	No trust at all	2	3	4	5	6	7	8	9	Completely trust	Unsure	
		Responses	Mean	Percentage	Percentage	Percentage	Percentage	Percentage	Percentage	Percentage	Percentage	Percentage	Percentage	
Region	Canada 2011-09	1209	5.10	9.9	5.8	6.7	7.7	19.9	13.9	15.6	9.0	1.8	1.6	8.1
	Atlantic	121	5.77	5.3	4.0	4.4	4.9	20.2	15.1	22.0	13.0	3.6	1.3	6.2
	Quebec	301	4.76	9.6	5.8	7.4	8.2	23.6	11.7	10.7	5.6	.5	1.2	15.6
	Ontario	364	5.13	11.7	4.6	6.4	6.1	19.4	16.1	16.0	7.5	3.2	1.7	7.4
	Prairies	242	5.22	10.7	5.7	5.1	9.1	20.3	12.4	16.1	13.5	1.2	2.1	3.8
	British Columbia	181	4.94	9.0	10.0	9.7	9.8	13.9	14.2	18.2	8.8	.7	1.9	3.9
Gender	Male	602	5.07	9.9	7.4	7.8	6.8	18.1	12.3	16.4	9.2	2.7	1.6	7.7
	Female	606	5.13	9.9	4.3	5.5	8.5	21.7	15.4	14.9	8.8	.9	1.7	8.4
Age	18 to 29	249	5.39	7.1	4.8	6.0	10.6	14.6	14.9	18.4	12.7	1.9	.7	8.2
	30 to 39	205	5.47	7.8	5.3	3.9	6.3	18.0	15.9	21.2	8.7	2.8	1.8	8.3
	40 to 49	251	5.09	5.2	8.4	8.8	7.2	22.0	14.1	15.2	7.4	1.7	1.2	8.8
	50 to 59	215	4.91	12.5	5.6	7.5	8.5	22.1	11.3	13.4	9.0	1.4	2.2	6.7
	60 plus	289	4.74	16.1	5.1	6.8	5.9	22.4	13.2	11.4	7.2	1.4	2.3	8.2
Vote Profile	Liberal	237	5.43	8.1	4.6	4.8	6.3	19.8	18.7	18.5	9.9	1.4	2.3	5.7
	Conservative	377	5.22	8.3	6.9	8.8	7.7	17.8	15.2	14.1	10.2	2.8	2.9	5.5
	NDP	280	4.99	9.5	6.7	7.3	6.9	23.5	10.0	17.2	7.9	1.3	1.0	8.6
	Bloc	34	4.49	18.5	2.9	5.0	5.1	14.3	23.2	10.9	3.4	.0	.0	16.8
	Green	28	5.06	13.5	4.2	2.7	11.1	25.8	5.4	27.4	9.8	.0	.0	.0
	Other	11	4.25	16.0	12.9	10.0	8.6	21.4	6.1	25.0	.0	.0	.0	.0
	Undecided	241	4.82	12.8	4.6	5.2	9.8	19.2	11.6	12.3	8.5	1.7	.3	13.9

Random telephone survey of 1,209 Canadians 18 years of age or older between September 25<sup>th</sup> and October 2<sup>nd</sup>, 2011. The margin of error for a survey of 1,209 respondents is ± 2.8 percentage points, 19 times out of 20.



NANOS OMNIBUS TRUST QUESTIONS – STAT SHEET

On a scale of 1 to 10, where 1 is no trust at all and 10 is complete trust, please rate your level of trust in the provincial government on the following: [ROTATE]

		Working in the public interest												
		Total	No trust at all	2	3	4	5	6	7	8	9	Completely trust	Unsure	
		Responses	Mean	Percentage	Percentage	Percentage	Percentage	Percentage	Percentage	Percentage	Percentage	Percentage	Percentage	Percentage
Region	Canada 2011-09	1209	4.86	13.0	6.4	9.3	8.5	19.1	11.7	15.7	8.7	1.4	2.1	4.1
	Atlantic	121	5.40	7.9	4.7	7.6	7.3	16.8	16.5	18.6	11.4	3.0	1.3	4.9
	Quebec	301	4.48	14.0	8.8	11.2	10.4	20.0	10.3	13.2	6.4	.0	1.9	3.9
	Ontario	364	4.87	14.9	5.5	8.0	6.9	21.0	9.6	16.6	8.9	1.7	2.0	4.9
	Prairies	242	5.22	11.7	4.2	8.9	7.1	16.1	14.8	17.2	11.6	1.7	2.9	3.7
	British Columbia	181	4.64	12.9	8.5	10.4	11.3	19.6	11.0	14.0	6.1	1.4	2.2	2.5
Gender	Male	602	4.85	14.0	6.8	10.4	7.8	16.9	11.5	15.0	10.2	1.7	2.4	3.2
	Female	606	4.87	12.1	6.0	8.1	9.2	21.3	11.9	16.3	7.1	1.1	1.9	4.9
Age	18 to 29	249	5.38	6.5	2.5	12.4	5.8	19.2	14.4	22.9	12.2	.0	.8	3.4
	30 to 39	205	5.09	11.4	6.5	7.9	9.0	14.4	11.1	24.1	9.1	.5	2.0	4.1
	40 to 49	251	4.52	13.6	8.4	11.7	11.7	17.2	11.6	10.5	7.9	1.6	1.2	4.4
	50 to 59	215	4.65	16.4	7.3	8.6	7.9	18.2	13.3	12.3	7.1	1.4	2.9	4.8
	60 plus	289	4.71	16.8	7.3	6.0	8.2	24.8	8.8	10.6	7.1	3.0	3.7	3.7
Vote Profile	Liberal	237	5.55	9.9	2.7	5.0	7.9	18.8	14.3	20.5	12.4	3.1	2.8	2.5
	Conservative	377	4.86	12.2	8.6	9.7	8.6	18.0	12.3	15.0	8.6	1.9	2.6	2.5
	NDP	280	4.58	14.5	5.9	12.8	10.3	18.4	11.3	14.3	7.3	.5	1.4	3.2
	Bloc	34	4.07	16.0	12.7	17.8	7.5	16.2	10.4	16.4	2.9	.0	.0	.0
	Green	28	4.97	7.2	7.6	10.3	8.8	33.9	3.5	10.9	17.7	.0	.0	.0
	Other	11	3.62	34.6	16.0	.0	.0	6.4	25.0	6.4	6.1	.0	.0	5.5
	Undecided	241	4.67	14.9	5.8	7.8	7.4	21.3	9.3	14.6	6.4	.3	2.3	10.0

Random telephone survey of 1,209 Canadians 18 years of age or older between September 25<sup>th</sup> and October 2<sup>nd</sup>, 2011. The margin of error for a survey of 1,209 respondents is ± 2.8 percentage points, 19 times out of 20.



NANOS OMNIBUS TRUST QUESTIONS – STAT SHEET

On a scale of 1 to 10, where 1 is no trust at all and 10 is complete trust, please rate your level of trust in the provincial government on the following: [ROTATE]

		Appointment of non-elected public officials												
		Total	No trust at all	2	3	4	5	6	7	8	9	Complete ly trust	Unsure	
		Respon ses	Mean	Percenta ge	Percenta ge	Percenta ge	Percenta ge	Percenta ge	Percenta ge	Percenta ge	Percenta ge	Percenta ge	Percenta ge	
Region	Canada 2011-09	1209	4.49	13.5	5.6	9.2	8.0	24.5	12.8	9.1	4.0	.9	1.1	11.3
	Atlantic	121	4.80	8.8	4.6	6.9	8.2	31.8	13.2	7.9	6.0	.0	1.3	11.3
	Quebec	301	4.32	12.3	6.2	12.8	7.1	24.1	10.9	8.7	2.2	.9	.8	13.9
	Ontario	364	4.35	17.1	5.6	8.4	5.5	24.7	11.8	8.9	4.5	.8	.8	11.8
	Prairies	242	4.81	12.3	4.5	6.5	9.9	23.0	15.1	13.0	4.3	1.4	1.7	8.4
	British Columbia	181	4.42	12.9	7.0	9.6	11.8	21.9	14.7	5.7	4.4	1.2	1.5	9.5
Gender	Male	602	4.51	13.3	5.8	9.3	10.0	25.4	11.0	9.4	4.3	1.4	1.3	9.0
	Female	606	4.48	13.7	5.5	9.1	6.0	23.6	14.6	8.8	3.7	.5	1.0	13.5
Age	18 to 29	249	5.05	7.2	2.6	7.7	8.2	25.5	16.1	11.4	7.4	.8	.0	13.1
	30 to 39	205	4.81	10.4	5.3	7.6	8.1	23.7	18.8	10.4	3.1	2.2	1.2	9.3
	40 to 49	251	4.13	13.2	9.6	13.0	6.4	26.9	11.6	7.2	2.4	.0	.4	9.3
	50 to 59	215	4.39	14.9	4.1	11.0	9.8	26.4	10.4	8.8	3.9	.7	1.2	8.8
	60 plus	289	4.18	20.3	6.2	6.8	7.8	20.6	8.7	8.1	3.3	1.0	2.6	14.6
Vote Profile	Liberal	237	4.91	10.3	2.7	4.8	9.4	28.8	15.8	10.0	4.9	1.5	.9	10.9
	Conservative	377	4.52	13.1	8.0	8.0	9.5	23.3	13.2	9.6	4.1	1.1	1.7	8.3
	NDP	280	4.45	14.6	4.4	12.9	7.5	23.8	13.1	8.2	5.8	1.2	.6	7.9
	Bloc	34	4.31	11.7	7.2	16.7	6.8	17.2	21.8	11.3	.0	.0	.0	7.2
	Green	28	4.85	9.3	8.5	16.1	4.0	14.8	3.7	27.1	3.5	.0	3.4	9.7
	Other	11	3.42	23.4	.0	24.1	6.4	39.7	.0	.0	.0	.0	.0	6.4
	Undecided	241	4.09	16.2	5.9	8.2	5.6	24.3	9.5	6.4	1.9	.0	1.0	21.1

Random telephone survey of 1,209 Canadians 18 years of age or older between September 25<sup>th</sup> and October 2<sup>nd</sup>, 2011. The margin of error for a survey of 1,209 respondents is ± 2.8 percentage points, 19 times out of 20.



NANOS OMNIBUS TRUST QUESTIONS – STAT SHEET

On a scale of 1 to 10, where 1 is no trust at all and 10 is complete trust, please rate your level of trust in the federal government on the following: [ROTATE]

		Procurement of government contracts												
		Total	No trust at all	2	3	4	5	6	7	8	9	Complete ly trust	Unsure	
		Respon ses	Mean	Percenta ge	Percenta ge	Percenta ge	Percenta ge	Percenta ge	Percenta ge	Percenta ge	Percenta ge	Percenta ge	Percenta ge	
Region	Canada 2011-09	1209	4.53	13.9	8.5	7.8	8.7	22.0	13.0	10.5	6.3	1.4	.7	7.2
	Atlantic	121	4.71	10.4	7.4	9.2	10.3	17.7	9.7	19.1	4.9	1.1	.0	10.2
	Quebec	301	4.38	14.6	7.9	9.7	10.5	19.5	15.9	9.3	4.9	.5	.6	6.6
	Ontario	364	4.58	15.2	9.3	5.8	6.6	22.6	11.3	9.1	8.8	1.5	1.2	8.5
	Prairies	242	4.65	14.8	6.3	5.8	9.1	24.4	11.4	12.6	7.4	1.5	.3	6.4
	British Columbia	181	4.39	11.3	11.8	10.3	8.3	24.6	15.7	6.5	3.1	2.4	.9	5.0
Gender	Male	602	4.60	14.6	8.2	6.7	9.7	21.4	12.1	12.2	7.3	1.4	.9	5.5
	Female	606	4.46	13.2	8.9	8.8	7.7	22.6	13.8	8.8	5.3	1.3	.6	9.0
Age	18 to 29	249	4.81	11.9	7.5	5.2	9.4	20.2	20.1	11.9	9.3	.0	.0	4.4
	30 to 39	205	4.61	9.3	10.1	10.8	9.0	22.2	11.9	10.9	5.5	1.1	1.5	7.7
	40 to 49	251	4.50	12.8	8.4	11.1	7.9	22.6	9.8	10.5	6.0	2.5	.4	8.0
	50 to 59	215	4.25	17.6	10.2	6.5	9.4	20.4	12.0	9.1	5.2	1.0	.8	7.7
	60 plus	289	4.46	17.1	7.2	5.9	8.1	24.1	11.1	10.0	5.3	2.0	1.0	8.3
Vote Profile	Liberal	237	4.41	14.9	7.6	9.1	9.0	26.8	12.7	7.3	6.3	1.4	.3	4.7
	Conservative	377	5.08	8.7	7.9	5.7	8.7	21.0	14.3	14.3	10.4	2.4	.6	6.0
	NDP	280	4.18	17.7	7.9	11.1	8.3	22.1	10.6	11.8	2.9	.3	.8	6.7
	Bloc	34	4.02	20.5	17.5	6.7	4.6	9.3	22.3	13.2	2.9	.0	.0	2.9
	Green	28	4.23	25.6	9.6	7.1	3.4	20.2	7.7	10.5	6.3	.0	5.4	4.0
	Other	11	3.56	28.9	.0	18.6	.0	40.0	.0	.0	6.1	.0	.0	6.4
	Undecided	241	4.32	13.7	10.2	5.8	10.5	19.9	14.0	6.2	4.3	1.4	.8	13.4

Random telephone survey of 1,209 Canadians 18 years of age or older between September 25<sup>th</sup> and October 2<sup>nd</sup>, 2011. The margin of error for a survey of 1,209 respondents is ± 2.8 percentage points, 19 times out of 20.



NANOS OMNIBUS TRUST QUESTIONS – STAT SHEET

On a scale of 1 to 10, where 1 is no trust at all and 10 is complete trust, please rate your level of trust in the federal government on the following: [ROTATE]

		Enforcement of government regulation												
		Total	No trust at all	2	3	4	5	6	7	8	9	Completely trust	Unsure	
		Responses	Mean	Percentage	Percentage	Percentage	Percentage	Percentage	Percentage	Percentage	Percentage	Percentage	Percentage	
Region	Canada 2011-09	1209	4.92	12.2	6.4	6.1	8.9	20.5	13.5	13.3	8.6	2.2	1.3	7.1
	Atlantic	121	5.12	10.3	3.0	8.5	4.8	27.8	12.1	12.7	10.6	1.8	1.4	7.1
	Quebec	301	4.94	9.2	5.8	7.4	8.0	18.6	15.6	15.4	4.9	1.3	1.2	12.5
	Ontario	364	4.89	13.5	7.5	6.3	9.1	19.1	10.6	14.4	9.1	3.1	1.6	5.8
	Prairies	242	4.98	15.3	8.0	2.1	7.8	17.3	17.1	11.1	13.2	3.3	.7	4.1
	British Columbia	181	4.72	11.7	5.1	7.3	13.9	26.0	11.9	11.0	6.6	.8	1.4	4.4
	Gender	Male	602	5.02	12.4	6.8	5.3	6.9	19.7	15.6	14.2	9.6	2.3	1.4
	Female	606	4.81	12.1	6.0	6.9	10.8	21.3	11.4	12.4	7.6	2.2	1.1	8.1
Age	18 to 29	249	5.20	11.3	3.1	4.1	7.2	20.6	19.6	16.9	8.1	2.6	.0	6.6
	30 to 39	205	4.91	8.5	9.9	6.3	10.4	20.4	13.8	10.9	8.9	1.7	1.9	7.3
	40 to 49	251	5.00	9.9	5.3	9.4	9.4	17.4	11.8	15.6	9.1	2.5	.8	8.7
	50 to 59	215	4.71	14.7	6.8	6.8	9.2	21.4	12.1	10.4	8.6	1.3	2.3	6.5
	60 plus	289	4.75	15.6	7.4	4.3	8.5	22.6	10.6	12.0	8.5	2.7	1.6	6.3
Vote Profile	Liberal	237	4.59	16.1	5.5	5.4	12.9	23.0	10.5	15.2	5.3	1.2	.7	4.2
	Conservative	377	5.45	7.7	6.4	4.7	7.5	19.5	16.8	15.8	12.0	4.3	1.7	3.7
	NDP	280	4.69	12.0	8.3	7.6	9.5	21.2	12.0	11.9	7.8	1.1	1.2	7.4
	Bloc	34	4.78	12.1	10.2	2.9	4.6	12.6	14.4	20.1	5.5	.0	.0	17.5
	Green	28	4.02	29.3	9.4	4.2	17.1	16.8	.0	8.0	9.8	.0	5.4	.0
	Other	11	3.79	23.4	8.6	10.0	.0	51.9	.0	.0	6.1	.0	.0	.0
	Undecided	241	4.82	13.3	4.1	7.6	6.2	18.8	15.1	9.5	8.0	2.0	1.1	14.4

Random telephone survey of 1,209 Canadians 18 years of age or older between September 25<sup>th</sup> and October 2<sup>nd</sup>, 2011. The margin of error for a survey of 1,209 respondents is ± 2.8 percentage points, 19 times out of 20.





NANOS OMNIBUS TRUST QUESTIONS – STAT SHEET

On a scale of 1 to 10, where 1 is no trust at all and 10 is complete trust, please rate your level of trust in the federal government on the following: [ROTATE]

		Working in the public interest												
		Total	No trust at all	2	3	4	5	6	7	8	9	Completely trust	Unsure	
		Responses	Mean	Percentage	Percentage	Percentage	Percentage	Percentage	Percentage	Percentage	Percentage	Percentage	Percentage	
Region	Canada 2011-09	1209	4.72	14.5	7.2	8.5	9.8	18.0	13.6	12.1	7.0	3.3	1.5	4.4
	Atlantic	121	4.81	11.2	8.4	5.5	13.4	16.4	13.5	12.9	9.6	1.4	.7	7.1
	Quebec	301	4.76	13.2	6.7	11.3	6.2	17.7	16.3	14.3	6.7	1.0	1.9	4.6
	Ontario	364	4.69	17.4	5.6	7.7	9.1	19.1	14.1	10.3	6.0	4.9	1.8	4.0
	Prairies	242	4.92	15.0	5.5	7.7	9.8	17.9	12.1	11.1	10.1	6.4	.7	3.8
	British Columbia	181	4.39	12.2	12.6	8.7	15.0	17.7	10.4	12.6	3.7	1.1	1.8	4.3
	Gender	Male	602	4.84	14.2	6.9	7.8	10.8	17.1	11.6	13.0	9.7	3.7	1.5
	Female	606	4.60	14.7	7.4	9.2	8.9	18.9	15.6	11.1	4.4	2.9	1.6	5.4
Age	18 to 29	249	5.00	12.6	3.7	9.4	9.7	18.1	16.0	14.3	8.5	3.8	1.0	2.9
	30 to 39	205	4.57	15.9	6.1	8.1	10.9	19.1	15.9	8.5	6.0	2.0	1.9	5.4
	40 to 49	251	4.65	11.6	9.6	10.4	10.8	18.8	10.7	12.3	6.0	2.9	1.6	5.2
	50 to 59	215	4.54	16.8	8.6	8.2	9.3	16.8	12.7	12.0	6.1	3.1	1.5	5.0
	60 plus	289	4.77	15.7	7.8	6.8	8.8	17.5	13.2	12.4	7.9	4.3	1.6	4.0
Vote Profile	Liberal	237	4.51	14.2	7.3	8.4	14.6	22.3	12.2	9.1	5.2	3.4	.7	2.6
	Conservative	377	5.43	11.1	4.3	8.0	7.4	14.8	11.8	17.3	14.3	5.6	2.2	3.2
	NDP	280	4.48	14.9	9.0	10.3	10.4	17.2	16.2	12.1	4.0	1.7	1.5	2.6
	Bloc	34	3.94	13.0	22.2	5.1	5.5	18.0	15.7	8.4	2.2	.0	.0	10.0
	Green	28	3.15	29.6	16.0	2.7	27.4	14.0	6.3	3.9	.0	.0	.0	.0
	Other	11	3.39	42.0	8.6	.0	5.5	25.0	.0	18.9	.0	.0	.0	.0
	Undecided	241	4.43	16.5	6.2	9.0	7.0	20.1	16.2	7.8	2.7	2.5	1.7	10.4

Random telephone survey of 1,209 Canadians 18 years of age or older between September 25<sup>th</sup> and October 2<sup>nd</sup>, 2011. The margin of error for a survey of 1,209 respondents is ± 2.8 percentage points, 19 times out of 20.



NANOS OMNIBUS TRUST QUESTIONS – STAT SHEET

On a scale of 1 to 10, where 1 is no trust at all and 10 is complete trust, please rate your level of trust in the federal government on the following: [ROTATE]

		Appointment of non-elected public officials												
		Total	No trust at all	2	3	4	5	6	7	8	9	Completely trust	Unsure	
		Responses	Mean	Percentage	Percentage	Percentage	Percentage	Percentage	Percentage	Percentage	Percentage	Percentage	Percentage	
Region	Canada 2011-09	1209	4.37	15.5	7.2	8.9	10.1	23.2	11.5	9.3	4.8	.7	1.1	7.7
	Atlantic	121	4.35	11.8	9.6	5.6	13.3	26.6	9.0	10.6	3.0	.0	.6	9.8
	Quebec	301	4.42	12.5	5.1	12.3	11.1	21.6	11.3	11.5	2.7	.6	.8	10.5
	Ontario	364	4.33	17.6	8.1	7.6	9.1	21.6	11.1	7.6	6.2	1.1	1.7	8.2
	Prairies	242	4.59	16.3	5.9	9.3	6.5	22.1	13.1	12.0	7.7	.7	1.1	5.3
	British Columbia	181	4.05	17.8	8.9	7.5	13.2	28.1	12.2	4.3	2.9	.9	.4	3.9
Gender	Male	602	4.39	15.9	7.1	9.6	10.0	21.9	11.3	10.3	5.5	.7	1.3	6.4
	Female	606	4.33	15.1	7.3	8.2	10.2	24.4	11.7	8.2	4.2	.8	.9	9.0
Age	18 to 29	249	4.75	12.8	3.0	5.5	14.2	23.0	14.9	14.7	4.9	.7	.0	6.3
	30 to 39	205	4.41	13.0	8.2	11.7	10.3	22.0	11.0	8.3	4.2	.5	2.8	8.2
	40 to 49	251	4.32	12.7	10.0	11.3	6.7	25.9	8.4	9.2	5.3	.4	.8	9.2
	50 to 59	215	4.10	18.9	9.2	9.6	8.4	20.2	12.6	8.7	3.2	1.5	.4	7.3
	60 plus	289	4.24	19.6	6.1	7.2	10.6	24.0	10.8	5.8	6.0	.7	1.6	7.6
Vote Profile	Liberal	237	4.02	16.8	8.1	8.5	13.8	26.5	9.8	4.9	3.1	.9	.0	7.7
	Conservative	377	4.87	11.5	5.0	9.2	8.8	22.3	14.7	14.4	7.5	.6	1.5	4.5
	NDP	280	4.31	17.8	6.7	9.2	9.8	24.4	8.9	9.7	5.5	.9	1.2	6.0
	Bloc	34	4.38	19.1	13.6	3.4	4.6	11.9	23.5	18.1	2.9	.0	.0	2.9
	Green	28	3.44	29.3	26.5	.0	4.0	21.2	9.7	3.9	.0	.0	5.4	.0
	Other	11	3.19	23.4	5.5	25.0	33.6	6.4	.0	6.1	.0	.0	.0	.0
	Undecided	241	4.09	15.4	7.2	9.5	9.3	22.4	10.4	4.7	2.7	.7	1.1	16.7

Random telephone survey of 1,209 Canadians 18 years of age or older between September 25<sup>th</sup> and October 2<sup>nd</sup>, 2011. The margin of error for a survey of 1,209 respondents is ± 2.8 percentage points, 19 times out of 20.



NANOS

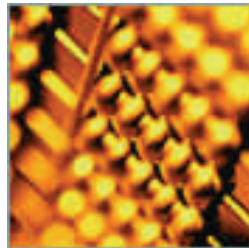
trusted insight and strategy

NANOS RESEARCH GROUP   Ottawa • Toronto • Montreal • Calgary • Vancouver • Halifax • Buffalo



# The Nanos Approach

At Nanos Research, we are experts at helping public-facing companies and organizations connect with the “hearts and minds” of customers or the general public. Our advantage comes from over 20 years experience in understanding the numbers and building upon them to provide strategic insight and intelligence in support of our clients’ business, marketing, public affairs and communications needs.



## Getting Started

At Nanos, we believe that small steps can lead to large insights. We are regularly in the field with national omnibus surveys. We'll sit down with you to learn about your challenges and work on your challenge together. The results can be used to conduct a strategic assessment of your current challenge or can be the basis of a broader mission plan for you to achieve your market or mind share objectives.

## The Right Solution for the Right Job

- Strategy Retainer
- Strategic Assessment
- Telephone Surveys
- Online Surveys
- eConsultation Polling and Online Dialogue
- Focus Groups
- Elite in-depth interviews
- Mystery Shopping
- Management Consulting



## A Trusted Source

Our team is headed by Nik Nanos, a leader in the market and public opinion research industry recognized for the quality of his work, the insightfulness of his counsel and his professional integrity. Media organizations regularly call upon Nik Nanos and Nanos Research to capture the public pulse and analyze complex issues.

**Nanos Research is the official pollster for CTV News and the Globe and Mail, Canada's national newspaper.**



### The Nanos Research Group

Our group of companies is a national team of like-minded research professionals and organizations bound by a common commitment to quality research, quality service and superior research outcomes.



[www.jenkinsresearch.ca](http://www.jenkinsresearch.ca)



[www.thinkwellresearch.ca](http://www.thinkwellresearch.ca)



[www.justasonmi.com](http://www.justasonmi.com)



[www.zincresearch.com](http://www.zincresearch.com)

**Contact us today for your next research or strategy project.**

John Nanos, Senior Vice President  
North America Toll-free 1(888) 737-5505 ext.223  
(416) 493-1965 ext. 223  
[jnanos@nanosresearch.com](mailto:jnanos@nanosresearch.com)